

# Rainbow Times

## FY2014 CHILDREN'S RAINBOW CENTER TRAINING PROGRAM

Every year, CRC work out the programs based on various opinion including trainee surveys. We are launching a new program for professionals in Mothers & Children's Homes. Following are information on the new training program, thematic training programs, and local joint training programs for child abuse and neglect prevention.

**<NEW> Training for Supervisors in Mothers & Children's Homes (November)**

This training program is for those who work in Mothers & Children's Home and has three or more years of experience working in residential facility for child welfare. There are increasing cases with mothers who were victim of domestic violence, and thus the mother and the child each has emotional challenges beside mother-child relationship difficulties. Mothers & Children's Homes are expected to develop specificity in its role and professional approach. In view of the increasing trainee from mothers & children's homes, we decided to set up a new training program.

**<Thematic Trainig>** Thematic training programs are for active supervisors with three or more years of experience in any child related organizations and facilitis. Please note that application is limited to one person per organization.

**Self-reliance Support for Maltreated Children in need of Protection (May)**

In self-reliance support for maltreated children in need for protection, there is a need for not only financial independence but also psychological/social independence support, and moreover, supprt for children as a parent to be. We are planning to cover the current status and challenges of self-reliance support to get future implication.

**Family Support – focusing on perinatal support (March)**

Family support has been an annual theme. We are planning to focus on perinatal support including discussion on infant death cases, interventive continuous support from pregnancy, and support for development of early mother-child relationship.

**<Local Joint Training > Yamagata prefecture (July), Shiga prefecture (October)**

CRC has been delivering training programs to selected local areas every year. This is a 2day program for professionals who have one or more years of experience and are in organizations related to Resional Network System for Maltreated Children in need of Protection, and Children's Guidance Centers. (Minamiyama)

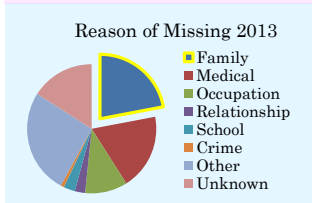
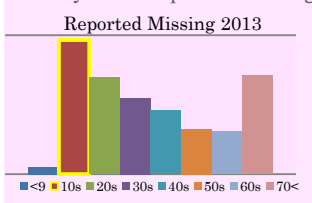


### Street Children in Japan

from National Police Agency Reports on Child Guidance & Missing Person 2012 (2013)

You don't see many children on street in Japan, however this does not mean every child has a place to go home.

The national police agency publishes annual statistic report on children protected on streets. According to the report, 16,708 runaway children under 19 were protected on streets in 2012. According to the age, 14-39% of the children were not alone at the time of protection. Also, 4,291 children within those who were protected of their delinquent behavior was a runaway. This implicates the high risk of runaway children.



There is another annual report by the national police agency on missing person. According to this report, there were 20,300 children under the age of 19 missing in 2012. The rate of children aged 10-19 is the highest in all age groups. The most popular reason was problem with family member.

have to go back home or are somehow found within a week... with fundamental problem unsolved... (Yamabe)

The 19<sup>th</sup> Japanese Society for Prevention of Child Abuse and Neglect (JaSPCAN) Shinsyu-Nagano Congress was held on December 13-14<sup>th</sup>, 2013. The main theme was "One Child, One Life -secured living and care-". The program went on with interesting themes such as fatal child abuse, intervention, support, and prevention.

**Report on The 19<sup>th</sup> JaSPCAN Congress**

CRC has been participating to JaSPCAN congress every year as an opportunity to gather and send out information. We opened an exhibition booth and were able to interact with professionals across Japan. We made report in section groups: Human resource in measures for child abuse and neglect, Current state and future of Japanese legislation, Development of professional care function and human resource in infant homes, and Research on measures for sexual problems in residential treatment facility for children with emotional difficulties.



**The 20<sup>th</sup> ISPCAN Congress is in Nagoya, Japan**

September 14<sup>th</sup>-17<sup>th</sup>, 2014

Abstract submission is open until February 28<sup>th</sup>  
<http://www.ispcancongress2014.org/>



Chief Editor: Minamiyama

Rainbow Times Planning & Editing Office  
 Children's Rainbow Center (Homepage : <http://www.crc-japan.net/english/>)  
 983 Gumizawa-cho, Totsuka-ku, Yokohama, 245-0062  
 TEL : 045-871-8011 FAX : 045-871-8091 Email : [guest-1@crc-japan.net](mailto:guest-1@crc-japan.net)